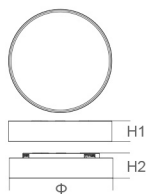


PURATI



1.This product contains a light source of energy efficiency class < D >

2.Light Model: Compo 900

Model	Voltage	Current	PF	Wattage	Luminous Flux	W/Φ (mm)	H1/H2 (mm)	ta(°C)
Compo 900 90/70/55W Switch	220-240V~	0.240A/0.170A	0.95	90/70/55W	9000lm/7000lm/5500lm	600	64/79	40

Suitable Version: With Or Without Color Temperature Selectable Function.

Color Temperature: Warm White:2700k-3200k Neutral White:3800k-4200k Cool White:6000k-6600k;



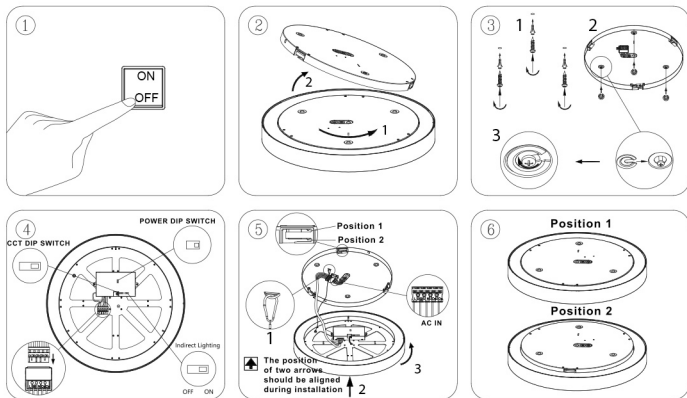
RoHS



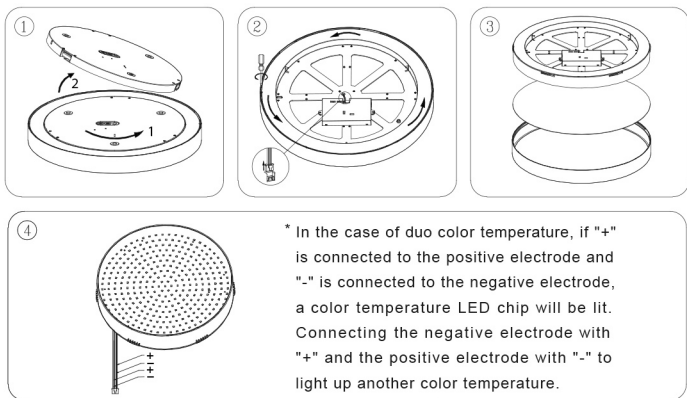
IP20



Installation instruction



Light source disassembly instruction



* In the case of duo color temperature, if "+" is connected to the positive electrode and "-" is connected to the negative electrode, a color temperature LED chip will be lit. Connecting the negative electrode with "+" and the positive electrode with "-" to light up another color temperature.

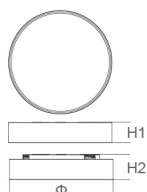
- Always follow this instruction to ensure correct and safe installation and functioning of the luminaire and keep it for future reference.
- Always isolate the power before commencing installation.
- If in doubt, consult a qualified electrician. Ensure that you always install the luminaire to the relevant regulations.
- The light source contained in this luminaire shall only be replaced by the manufacturer or his service agent or a similar qualified person.

Correct Disposal of this product



This marking indicates that this product should not be disposed with other household wastes throughout the EU. To prevent possible harm to the environment or human health from uncontrolled waste disposal, recycle it responsibly to promote the sustainable reuse of material resources. To return your used device, please use the return and collection systems or contact the retailer where the product was purchased. They can take this product for environmental safe recycling.

PURATI



1.This product contains a light source of energy efficiency class < D >

2.Light Model: Compo 900 DALI

Model	Voltage	Current	PF	Wattage	Luminous Flux	W/Φ (mm)	H1/H2 (mm)	ta(°C)
Compo 900 90/70/55W Switch	220-240V~	0.240A/0.170A	0.95	90/70/55W	9000lm/7000lm/5500lm	900	64/79	40

Suitable Version: With Or Without Color Temperature Selectable Function.

Color Temperature: Warm White:2700k-3200k Neutral White:3800k-4200k Cool White:6000k-6600k;



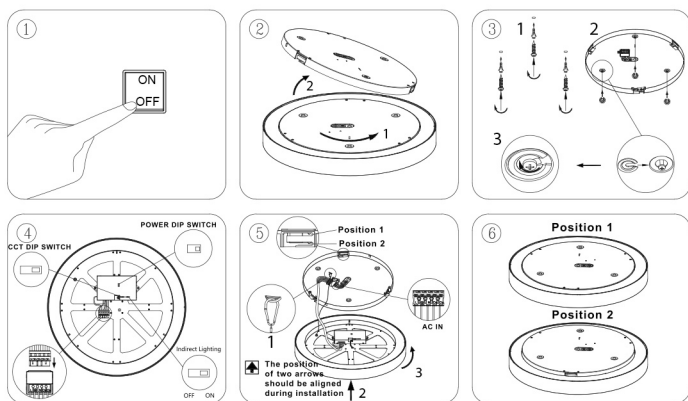
RoHS

CE

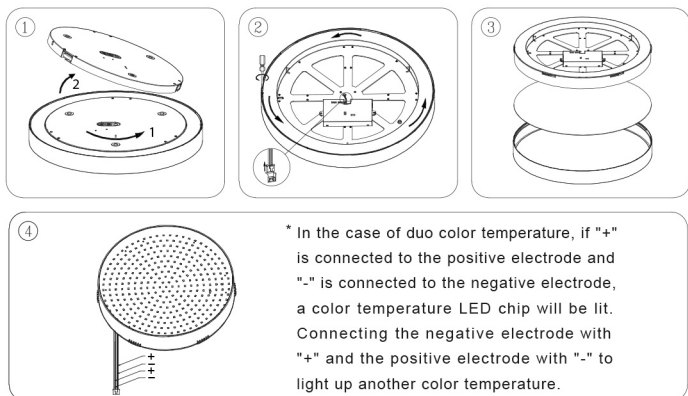
IP20



Installation instruction



Light source disassembly instruction



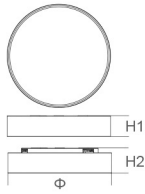
- Always follow this instruction to ensure correct and safe installation and functioning of the luminaire and keep it for future reference.
- Always isolate the power before commencing installation.
- If in doubt, consult a qualified electrician. Ensure that you always install the luminaire to the relevant regulations.
- The light source contained in this luminaire shall only be replaced by the manufacturer or his service agent or a similar qualified person.

Correct Disposal of this product



This marking indicates that this product should not be disposed with other household wastes throughout the EU. To prevent possible harm to the environment or human health from uncontrolled waste disposal, recycle it responsibly to promote the sustainable reuse of material resources. To return your used device, please use the return and collection systems or contact the retailer where the product was purchased. They can take this product for environmental safe recycling.

PURATI



1. This product contains a light source of energy efficiency class < D >
2. Light Model: Compo 900

Model	Voltage	Current	PF	Wattage	Luminous Flux	W/Φ (mm)	H1/H2 (mm)	ta (°C)
Compo 900 90/70/55W Switch	220-240V~	0.240A/0.170A	0.95	90/70/55W	9000lm/7000lm/5500lm	900	64/79	40

Suitable Version: With Or Without Color Temperature Selectable Function.
Color Temperature: Warm White:2700k-3200k Neutral White:3800k-4200k Cool White:6000k-6600k;



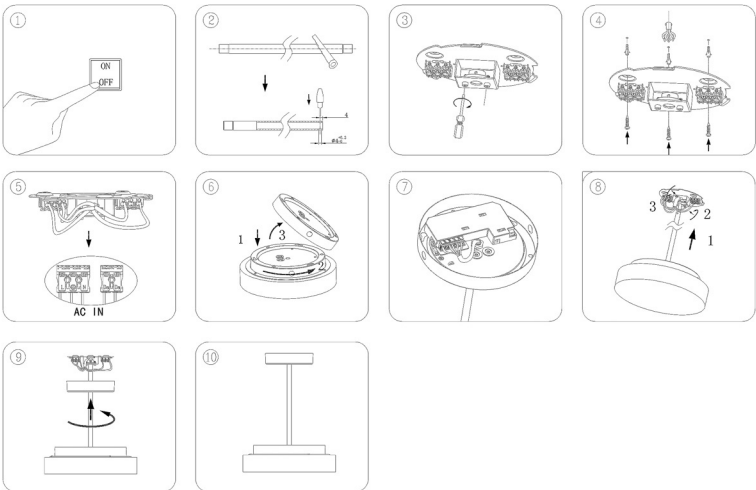
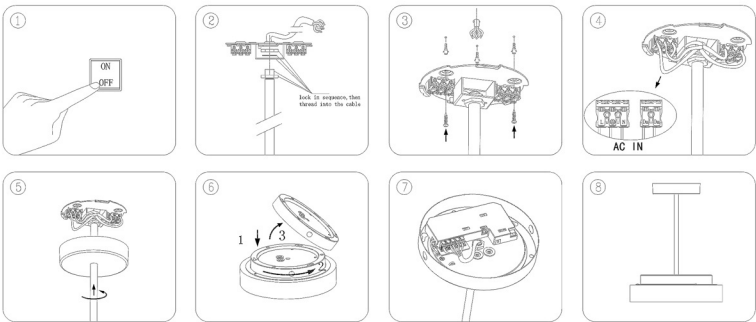
RoHS



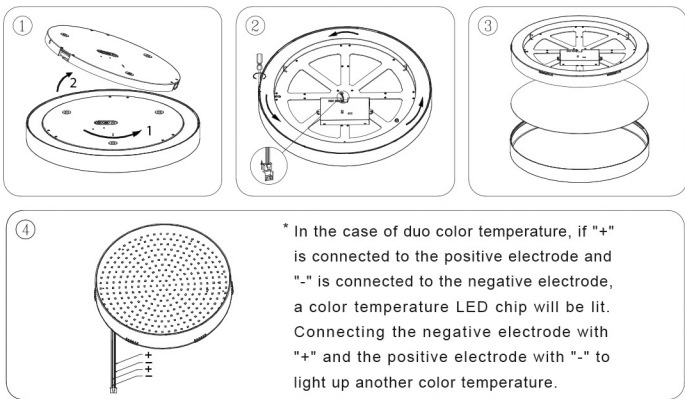
IP20



Installation instruction



Light source disassembly instruction



- Always follow this instruction to ensure correct and safe installation and functioning of the luminaire and keep it for future reference.
- Always isolate the power before commencing installation.
- If in doubt, consult a qualified electrician. Ensure that you always install the luminaire to the relevant regulations.
- The light source contained in this luminaire shall only be replaced by the manufacturer or his service agent or a similar qualified person.

Correct Disposal of this product



This marking indicates that this product should not be disposed with other household wastes throughout the EU. To prevent possible harm to the environment or human health from uncontrolled waste disposal, recycle it responsibly to promote the sustainable reuse of material resources. To return your used device, please use the return and collection systems or contact the retailer where the product was purchased. They can take this product for environmental safe recycling.