

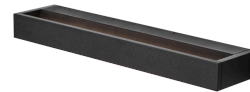
# NOVITA 400, Black, Triac

<https://purati.com/product/novita400/>

## DESCRIPTION

Sleek and versatile wall light with gentle upward and downward illumination

Novita linear wall light combines refined simplicity, versatility and high quality offering lighting performance, visual comfort and the perfect ambience for the interior. This LED wall light is a great addition to halls, sideways, corridors, stairs, entrances. With IP44, particularly apt as a Vanity Light.



## QUICKINFO

### GENERAL

Finish	Black
Material	Aluminium, opal diffuser
IP	44
Lifespan	L80/50,000h
Warranty	5 years

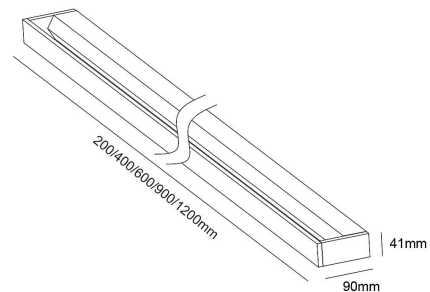
### LED

LED Chip	Osram LEDs
Lumen	640lm
CCT	3000K/4000K
CRI	>90
SDCM	<3
UGR	<14

### ELECTRICAL

Voltage	220-240V
Power	10W
Driver (Built-in)	Triac
Light distribution	Indirect light

CRI >90	SDCM <3	IP20	5 years
------------	------------	------	------------



## PURATI PTY LTD

Unit 10, 80 O'Riordan St, Alexandria NSW 2015

Tel: +61 2 8065 8181 [sales@purati.com](mailto:sales@purati.com)