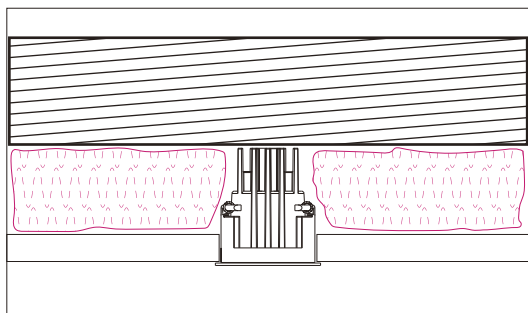


Installation Directions

1. Switch off mains power supply
2. Connect Dimmable Driver to mains voltage cable (L, N) Do not connect downlight to driver if driver is live. Inrush current from live driver will cause instant downlight failure. Do not switch secondary side.
3. Carefully install downlight into pre-cut 60mm hole.
4. Turn on mains power and switch on lighting circuit.

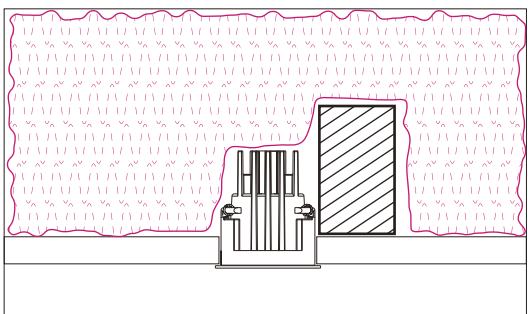
Approved Clearances

Note: 0mm required but 25mm always recommended for optimum product lifespan through effective heat dissipation.



Example 1:

0mm Approved Height Clearance. Building element abutting rear, insulation abutting sides of fitting.



Example 2:

0mm Approved Side Clearance. Building element abutting side of fitting, insulation abutting and covering fitting.

Driver is designed to be covered and abutted with IC / IC-F approved insulation.



Cutting of holes prior to receiving goods is entirely at the risk of the installer.