

INSTALLATION INSTRUCTIONS



READ AND FOLLOW ALL SAFETY INSTRUCTIONS! SAVE THESE INSTRUCTIONS AND DELIVER TO OWNER AFTER INSTALLATION

⚠ CAUTION

- Temperature / occasion must be meet the luminaire application.
- Sharp objects must be kept far away from the luminaire.
- The ceiling / track must can hold the weight of the luminaire.
- Local voltage / frequency / dimmer must match the luminaire.

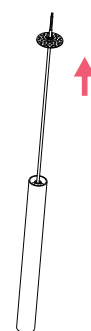
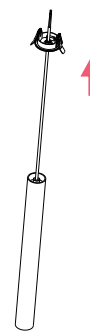
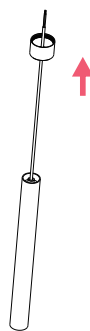
⚠ WARNING

- Wire connection / mounting must meet local electrical / building codes, such as NEC, IEEE, etc.
- Confirm that wires are in good condition and connectors are tight, conneting components when power off.
- A qualified electrician is required to install / remove the luminaire.
- Keep hands dry, and wear gloves when working.
- Replace any damaged parts immediately.
- Do not directly look at the lamp and do not touch the hot surface when it working.
- Using the original accessories. Do not modify the mechanical or electrical part of the luminaire. Or will voids warranty.
- The luminaire should be cleaned with a soft, damp cloth regularly.
- Follow local recycling laws / codes.

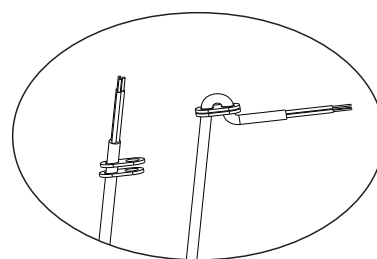
INSTALLATION INSTRUCTIONS



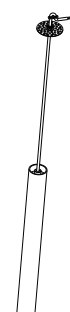
2



3



4



6

INSTALLATION INSTRUCTIONS



READ AND FOLLOW ALL SAFETY INSTRUCTIONS! SAVE THESE INSTRUCTIONS AND DELIVER TO OWNER AFTER INSTALLATION

⚠ CAUTION

- Temperature / occasion must be meet the luminaire application.
- Sharp objects must be kept far away from the luminaire.
- The ceiling / track must can hold the weight of the luminaire.
- Local voltage / frequency / dimmer must match the luminaire.

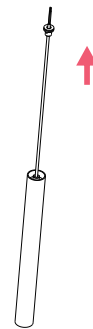
⚠ WARNING

- Wire connection / mounting must meet local electrical / building codes, such as NEC, IEEE, etc.
- Confirm that wires are in good condition and connectors are tight, conneting components when power off.
- A qualified electrician is required to install / remove the luminaire.
- Keep hands dry, and wear gloves when working.
- Replace any damaged parts immediately.
- Do not directly look at the lamp and do not touch the hot surface when it working.
- Using the original accessories. Do not modify the mechanical or electrical part of the luminaire. Or will voids warranty.
- The luminaire should be cleaned with a soft, damp cloth regularly.
- Follow local recycling laws / codes.

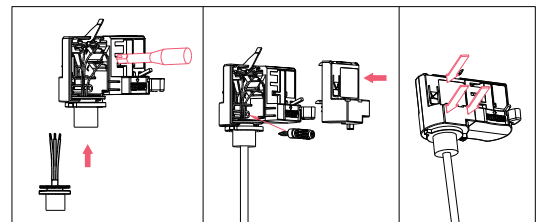
INSTALLATION INSTRUCTIONS



2



3



4



6