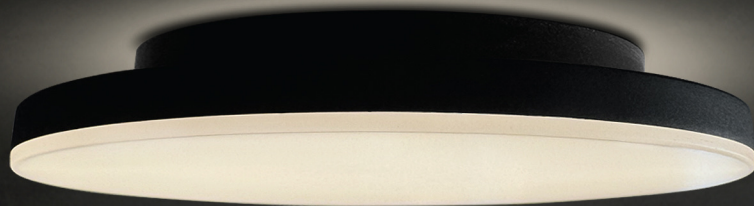


PURATI.



DISC

PURATI

Design

n p k | design

PURATI.

Production

The close collaboration between
Purati and npk design. Together,
our mission is to create the
great products & bring new
lighting solutions for architecture.





npk design b.v.

Our designs are made by npk design b.v. is an award-winning design agency which has developed a wide range of successfully products for us more than 10 years.

From Slice series to Fusi series, has been gaining prestigious international design awards such as IF Design Award, Red Dot Award, German Design Award.





Purati

Performance, Uniqueness, Responsibility,
Aesthetics, Technology, Innovation (PURATI).
Those are our core value and foundation.

Our lights save space, save resources, and
offer greater quality.

We offer architectural lighting of premium
quality and performance and with unique
design.





npk design
Leiden,
The Netherlands



PURATI

Purati
Manufacturing Plant
Ningbo, China

PURATI

Purati HQ
Sydney, Australia

DISC

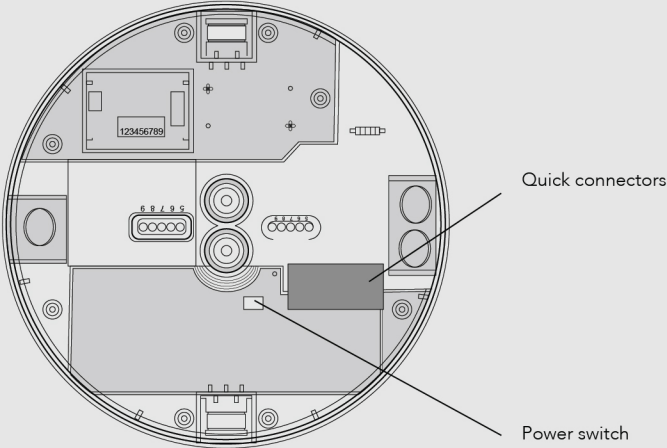
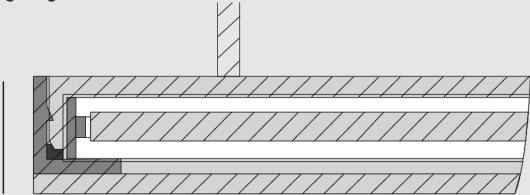
Designed with simplicity by npk design b.v.

The Disc is an ultra-thin, smooth and high level of diffused brightness. The series is available in a variety of sizes, mounting options and functionalities, making the lighting solution perfect for residential and commercial applications.



The initial design

Housing height
17mm





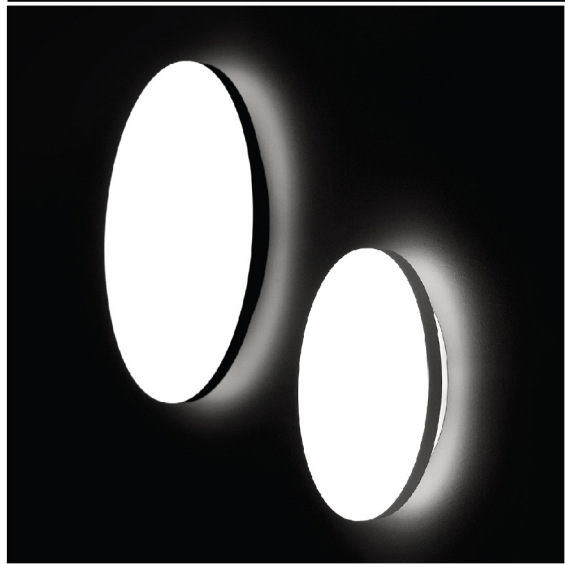
Explore the essence of Disc series

Simplified integration

Designed for an ultra-thin design of just 39mm in height including build-in LED driver.

Direct and Indirect light distribution

Equipped with the excellent reflector technology and combined with frosted opal diffuser providing a smooth, uniform and ambient light.





Versatility

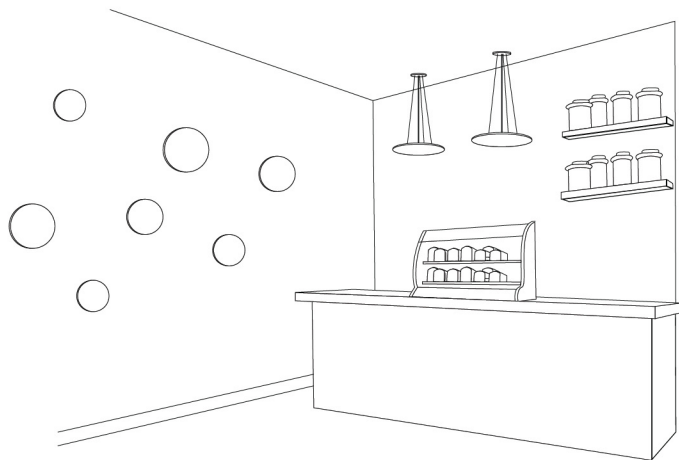
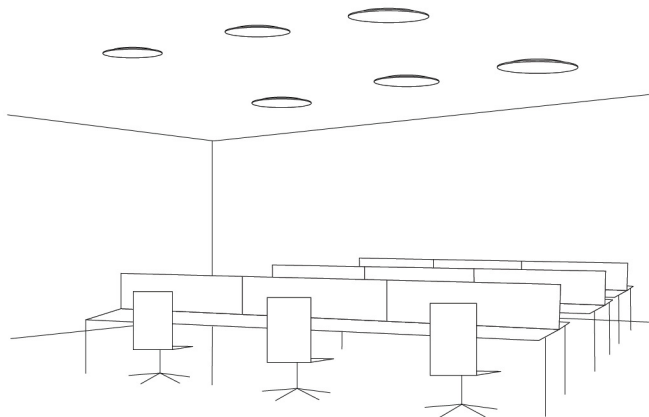
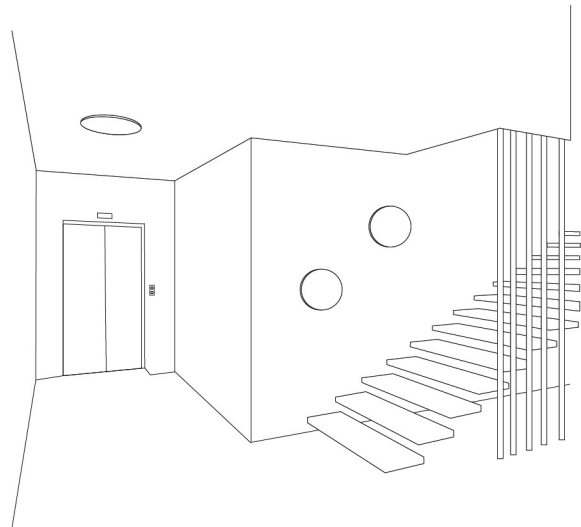
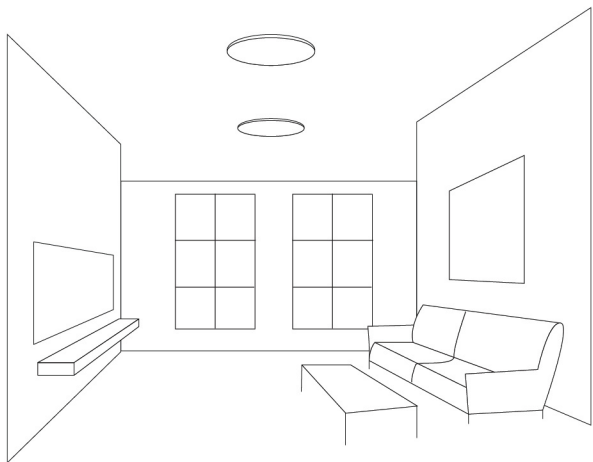
Configurable in various sizes, colors, mounting and power options, ideal for any interior project.



Areas of application

Residential
Multi-Residential
Office
Hospitality
Hotel





Technical data

		Size	Power	Lumens (at 3000k)	Beam Angle	Efficacy	Driver
❶	Disc 220	220mm	15/10/8W	1500/1000/800lm	120°	100lm/W	Phase cut (Build-in), DALI (Build-in)
❷	Disc 300	300mm	24/18/10W	2400/1800/1000lm	120°	100lm/W	
❸	Disc 450	450mm	30/24/18W	3000/2400/1800lm	120°	100lm/W	

General	
Finishes	<input type="checkbox"/> White <input checked="" type="checkbox"/> Black
Material	Aluminium + Polycarbonate
IP Rating	IP20
Lifespan	L80/50,000h
Warranty	5 Years

LED	
CCT	3000K/4000K switch
CRI	>90
SDCM	<3
UGR	<23

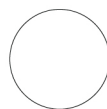
Electrical	
Mounting	Surface mounted Wall mounted Wire Suspension (2m) Track mounted
Function	Motion sensor Emergency light (90 mins @ 2W)

1



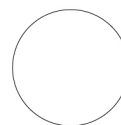
Ø 220

2

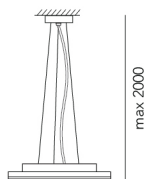


Ø 300

3

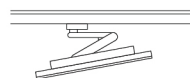


Ø 450



max 2000

Wire suspension
300



Track mounted
220/300

Head Office

Unit 10, 80 O'Riordan Street,
Alexandria NSW 2015

Phone

+61 2 8065 8181

Email

sales@purati.com



www.purati.com