

PURATI

## INSTALLATION GUIDELINES POINT R Track Light L

### PREPARATION:

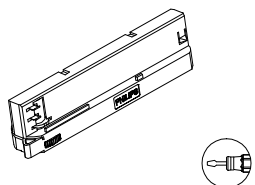
- The mains isolator on the consumer unit/fuse board must be in "OFF" position before commencing any electrical work.
- The luminaires should be mounted into the correct 3-phase track.
- With all painted / plated products some shade and finishing variation may occur, please make sure luminaires are checked before installation.
- The manufacturer reserves the right to improve the product specification without prior notice.



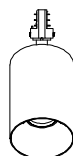
IP20

Installation must be done by a qualified electrician.

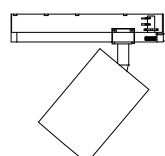
### DRIVER



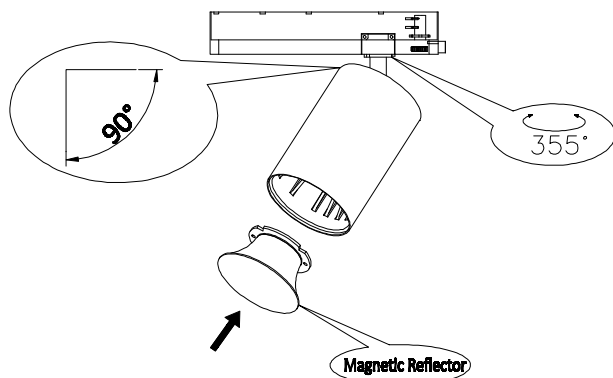
### FRONT SIDE



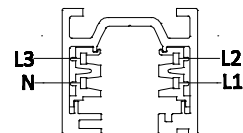
### PROFILE



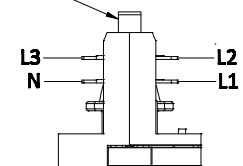
### CONNECTION PREVIEW



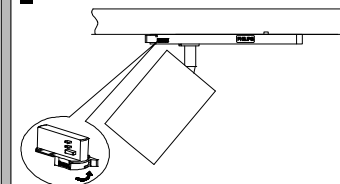
### Structure diagram of Track and adaptor;



### Earthing

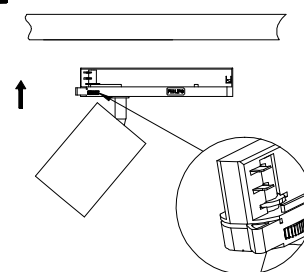


2



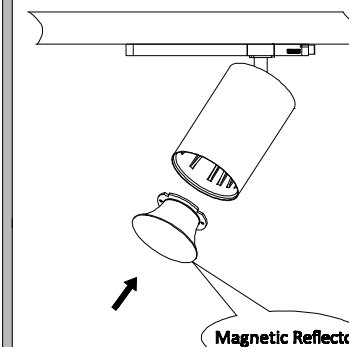
2) Put the adaptor into the track and hook it. Choose L1/L2/L3 on the knob according to your circuit;

1



1) The arrow must be aligned with the "0"/"OFF" point on the knob to keep 4 pins inside;

3



3) Install the magnetic reflector if not mounted from our factory;