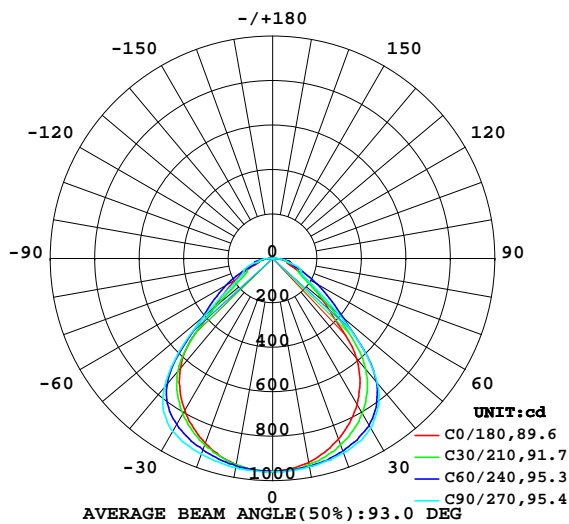


LUMINAIRE PHOTOMETRIC TEST REPORT

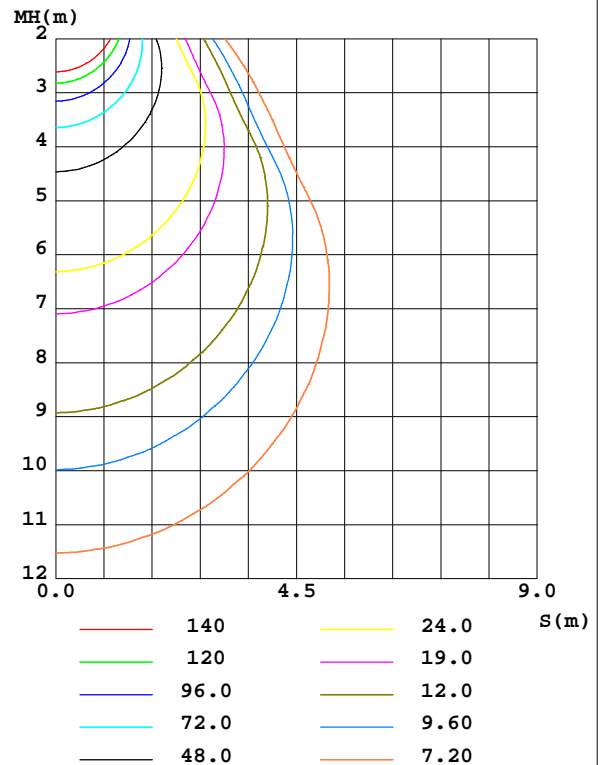
Test:U:229.66V I:0.0876A P:19.722W PF:0.9800 Freq:50.00Hz Lamp Flux:2138.72x1 lm		
NAME: Verso 1200 20W NW	TYPE:	WEIGHT:
SPEC.:	DIM.:	SERIAL No.:
MFR.: PURATI PTY LTD	SUR.:	Shielding Angle:

DATA OF LAMP		PHOTOMETRIC DATA				Eff: 108.44 lm/W
MODEL		Imax(cd)	960.8	S/MH(C0/180)	1.23	
NOMINAL POWER(W)	20	LOR(%)	100.0	S/MH(C90/270)	1.36	
RATED VOLTAGE(V)	230	TOTAL FLUX(lm)	2138.7	η UP,DN(C0-180)	0.3,48.8	
NOMINAL FLUX(lm)	2138.72	CIE CLASS	DIRECT	η UP,DN(C180-360)	0.2,50.7	
LAMPS INSIDE	1	η up(%)	0.5	CIBSE SHR NOM	1.25	
TEST VOLTAGE(V)	229.3	η down(%)	99.5	CIBSE SHR MAX	1.35	

LUMINOUS INTENSITY DISTRIBUTION DIAGRAM



C0 PLANE ISOLUX DIAGRAM (UNIT:lx)



C Range: 0 - 360DEG
C Interval: 30.0DEG
Test Speed: HIGH
Temperature:25.3°C
Operators:Mr.Ma
Test Date:20 February 2024

γ Range: 0 - 180DEG
 γ Interval: 1.0DEG
Test System:EVERFINE GO-2000B_V1 SYSTEM V2.00.459
Humidity:65.0%
Test Distance:6.200m [K=1.0000]
Remarks:

ZONAL FLUX DIAGRAM

ZONAL FLUX DIAGRAM:

γ	C0	C45	C90	C135	C180	C225	C270	C315	γ	Φ zone	Φ total	%lum,lamp
10	932.5	946.6	951.1	940.4	943.0	944.9	954.1	947.2	0- 10	90.83	90.83	4.25,4.25
20	865.9	908.2	929.3	891.4	885.4	904.9	936.3	905.3	10- 20	261.9	352.7	16.5,16.5
30	759.8	837.4	880.9	810.8	791.0	835.2	898.6	830.5	20- 30	401.4	754.2	35.3,35.3
40	586.9	690.8	733.5	664.2	646.1	701.6	757.0	693.6	30- 40	479.9	1234	57.7,57.7
50	300.4	371.6	384.8	337.7	342.6	372.9	397.9	373.3	40- 50	406.5	1641	76.7,76.7
60	162.2	188.6	163.2	173.1	191.6	193.3	173.8	195.3	50- 60	229.3	1870	87.4,87.4
70	79.17	112.3	125.7	99.42	88.42	109.6	131.2	110.6	60- 70	140.9	2011	94,94
80	52.27	65.02	62.73	56.40	60.97	63.33	60.34	66.70	70- 80	84.38	2095	98,98
90	0.2565	0.3096	0.3540	0.2976	0.5677	0.3977	1.114	0.5967	80- 90	33.04	2128	99.5,99.5
100	0.4153	0.4875	0.5914	0.4871	0.4516	0.5490	0.6144	0.5073	90-100	0.4637	2129	99.5,99.5
110	0.6927	0.8268	1.017	0.8278	0.6613	0.8555	0.9828	0.8076	100-110	0.6910	2129	99.6,99.6
120	1.284	1.383	1.553	1.388	1.103	1.384	1.485	1.283	110-120	1.064	2130	99.6,99.6
130	2.066	2.054	2.187	2.052	1.800	1.996	2.089	1.911	120-130	1.504	2132	99.7,99.7
140	2.668	2.707	2.812	2.663	2.389	2.589	2.697	2.534	130-140	1.796	2134	99.8,99.8
150	3.278	3.353	3.378	3.190	2.931	3.108	3.261	3.181	140-150	1.827	2136	99.9,99.9
160	4.008	3.942	3.867	3.743	3.634	3.660	3.768	3.826	150-160	1.615	2137	99.9,99.9
170	4.673	4.318	4.221	4.200	4.318	4.136	4.149	4.280	160-170	1.140	2138	100,100
180	4.890	4.506	4.410	4.501	4.894	4.500	4.405	4.494	170-180	0.4171	2139	100,100
DEG	LUMINOUS INTENSITY:cd									UNIT: lm		

Conical surface Flux(90deg): 1461.8 lm

%lum = 68.3%

%lamp = 68.3%

Conical surface Flux(130deg): 1947.7 lm

%lum = 91.1%

%lamp = 91.1%

C Range: 0 - 360DEG
C Interval: 30.0DEG
Test Speed: HIGH
Temperature:25.3°C
Operators:Mr.Ma
Test Date:20 February 2024

γ Range: 0 - 180DEG
 γ Interval: 1.0DEG
Test System:EVERFINE GO-2000B_V1 SYSTEM V2.00.459
Humidity:65.0%
Test Distance:6.200m [K=1.0000]
Remarks:

LUMINANCE LIMITATION CURVES

Test:U:229.66V I:0.0876A P:19.722W PF:0.9800 Freq:50.00Hz
Lamp Flux:2138.72x1 lm

NAME: Verso 1200 20W NW

TYPE:

WEIGHT:

SPEC.:

DIM.:

SERIAL No.:

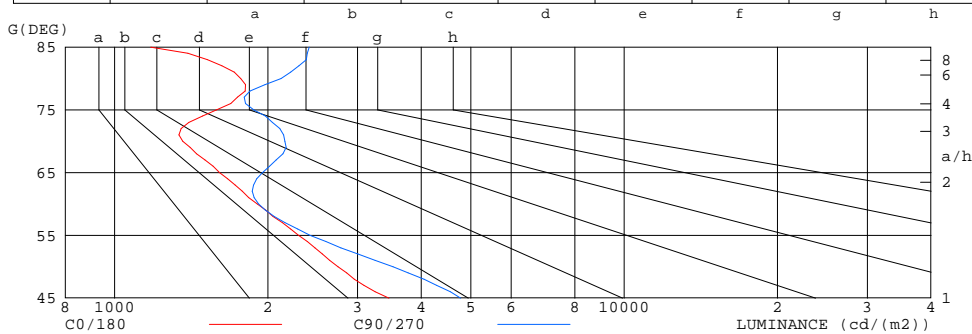
MFR.: PURATI PTY LTD

SUR.:

Shielding Angle:

LUMINANCE LIMITATION CURVES

GLARE	CLASS	ILLUMINANCE (lx)							
1.15	A	2000	1000	500	<=300				
1.50	B		2000	1000	500	<=300			
1.85	C			2000	1000	500	<=300		
2.20	D				2000	1000	500	<=300	
2.55	E					2000	1000	500	<=300



LUMINANCE cd/(m2)

G(DEG)	C0/180	C90/270
85	1177	2409
80	1769	2123
75	1585	1876
70	1360	2160
65	1608	1952
60	1906	1919
55	2297	2419
50	2747	3519
45	3454	4777

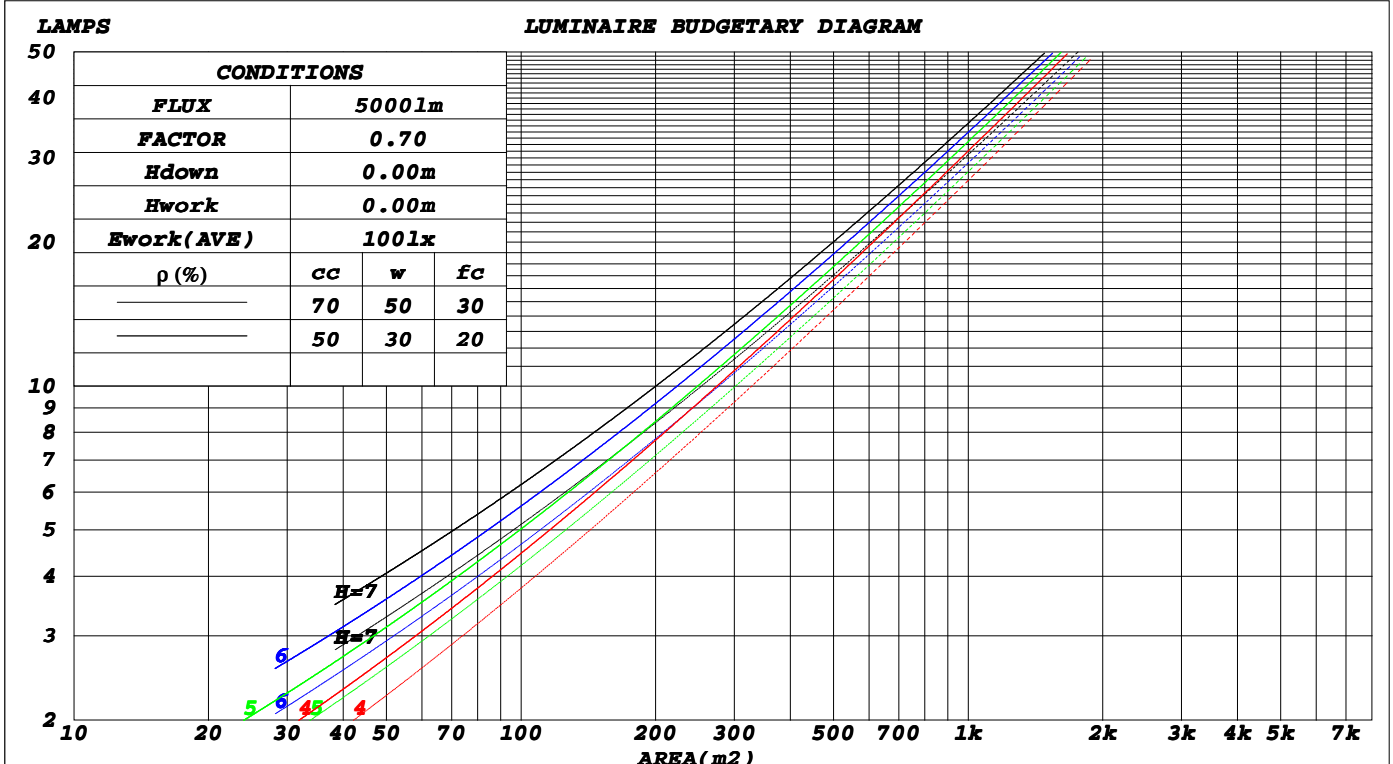
C Range: 0 - 360DEG
C Interval: 30.0DEG
Test Speed: HIGH
Temperature:25.3°C
Operators:Mr.Ma
Test Date:20 February 2024

γ Range: 0 - 180DEG
γ Interval: 1.0DEG
Test System:EVERFINE GO-2000B_V1 SYSTEM V2.00.459
Humidity:65.0%
Test Distance:6.200m [K=1.0000]
Remarks:

CU AND LUMINAIRE BUDGETARY ESTIMATE DIAGRAM

Test:U:229.66V I:0.0876A P:19.722W PF:0.9800 Freq:50.00Hz Lamp Flux:2138.72x1 lm		
NAME: Verso 1200 20W NW	TYPE:	WEIGHT:
SPEC.:	DIM.:	SERIAL No.:
MFR.: PURATI PTY LTD	SUR.:	Shielding Angle:

ρ_{cc}	80%			70%			50%			30%			10%			0
ρ_w	50%	30%	10%	50%	30%	10%	50%	30%	10%	50%	30%	10%	50%	30%	10%	0
ρ_{fc}	20%			20%			20%			20%			20%			0
RCR	RCR:Room Cavity Ratio Coefficients of Utilization(CU)															
0.0	1.19	1.19	1.19	1.16	1.16	1.16	1.11	1.11	1.11	1.06	1.06	1.06	1.02	1.02	1.02	.00
1.0	1.06	1.02	.99	1.04	1.00	.97	.99	.97	.94	.95	.93	.91	.92	.90	.88	.86
2.0	.94	.88	.83	.92	.87	.82	.89	.84	.80	.86	.82	.79	.83	.80	.77	.75
3.0	.84	.77	.71	.83	.76	.71	.80	.74	.69	.77	.72	.68	.75	.71	.67	.65
4.0	.76	.68	.62	.75	.67	.62	.72	.66	.61	.70	.64	.60	.68	.63	.59	.57
5.0	.69	.61	.55	.68	.60	.54	.65	.59	.54	.64	.58	.53	.62	.57	.52	.51
6.0	.62	.54	.48	.62	.54	.48	.60	.53	.48	.58	.52	.47	.57	.51	.47	.45
7.0	.57	.49	.43	.56	.49	.43	.55	.48	.43	.53	.47	.43	.52	.46	.42	.40
8.0	.52	.44	.39	.52	.44	.39	.50	.44	.39	.49	.43	.38	.48	.42	.38	.36
9.0	.48	.41	.35	.48	.40	.35	.47	.40	.35	.45	.39	.35	.44	.39	.35	.33
10.0	.45	.37	.32	.44	.37	.32	.43	.37	.32	.42	.36	.32	.41	.36	.32	.30



C Range: 0 - 360DEG
C Interval: 30.0DEG
Test Speed: HIGH
Temperature: 25.3°C
Operators: Mr.Ma
Test Date: 20 February 2024

γ Range: 0 - 180DEG
 γ Interval: 1.0DEG
Test System: EVERFINE GO-2000B_V1 SYSTEM V2.00.459
Humidity: 65.0%
Test Distance: 6.200m [K=1.0000]
Remarks:

WEC AND CCEC

Test:U:229.66V I:0.0876A P:19.722W PF:0.9800 Freq:50.00Hz Lamp Flux:2138.72x1 lm		
NAME: Verso 1200 20W NW	TYPE:	WEIGHT:
SPEC.:	DIM.:	SERIAL No.:
MFR.: PURATI PTY LTD	SUR.:	Shielding Angle:

ρ_{cc}	80%			70%			50%			30%			10%			0														
ρ_w	50%	30%	10%	50%	30%	10%	50%	30%	10%	50%	30%	10%	50%	30%	10%	0														
ρ_{fc}	20%			20%			20%			20%			20%			0														
RCR	RCR:Room Cavity Ratio															Wall Exitance Coefficients(WEC)														
0.0																														
1.0	.268	.152	.048	.261	.149	.047	.247	.142	.045	.235	.136	.044	.224	.130	.042															
2.0	.253	.139	.043	.247	.136	.042	.235	.131	.041	.225	.126	.039	.215	.121	.038															
3.0	.237	.126	.038	.232	.124	.037	.221	.120	.036	.212	.116	.036	.203	.112	.035															
4.0	.221	.115	.034	.217	.113	.033	.208	.110	.033	.199	.107	.032	.191	.104	.032															
5.0	.207	.105	.031	.203	.104	.030	.195	.101	.030	.187	.099	.029	.180	.096	.029															
6.0	.194	.097	.028	.190	.096	.028	.183	.094	.027	.176	.092	.027	.170	.090	.027															
7.0	.182	.090	.026	.179	.089	.025	.173	.087	.025	.167	.085	.025	.161	.084	.025															
8.0	.172	.084	.024	.169	.083	.023	.163	.081	.023	.158	.080	.023	.152	.078	.023															
9.0	.162	.078	.022	.159	.078	.022	.154	.076	.022	.149	.075	.021	.145	.074	.021															
10.0	.153	.074	.020	.151	.073	.020	.146	.072	.020	.142	.070	.020	.138	.069	.020															

ρ_{cc}	80%			70%			50%			30%			10%			0
ρ_w	50%	30%	10%	50%	30%	10%	50%	30%	10%	50%	30%	10%	50%	30%	10%	0
ρ_{fc}	20%			20%			20%			20%			20%			0
RCR	RCR:Room Cavity Ratio Ceiling Cavity Exitance Coefficients(CCEC)															
0.0	.194	.194	.194	.166	.166	.166	.113	.113	.113	.065	.065	.065	.021	.021	.021	
1.0	.181	.160	.141	.155	.138	.122	.106	.095	.084	.061	.055	.049	.020	.018	.016	
2.0	.171	.136	.106	.146	.117	.092	.100	.081	.064	.058	.047	.038	.019	.015	.012	
3.0	.162	.118	.083	.139	.102	.072	.095	.071	.050	.055	.041	.030	.018	.013	.010	
4.0	.154	.104	.066	.132	.090	.058	.091	.063	.041	.053	.037	.024	.017	.012	.008	
5.0	.146	.094	.054	.126	.081	.047	.087	.057	.033	.050	.033	.020	.016	.011	.007	
6.0	.139	.085	.046	.120	.074	.040	.083	.051	.028	.048	.030	.017	.015	.010	.006	
7.0	.133	.078	.039	.114	.068	.034	.079	.047	.024	.046	.028	.014	.015	.009	.005	
8.0	.127	.072	.034	.109	.063	.030	.076	.044	.021	.044	.026	.013	.014	.008	.004	
9.0	.121	.067	.031	.105	.058	.027	.072	.041	.019	.042	.024	.011	.014	.008	.004	
10.0	.116	.063	.027	.100	.055	.024	.070	.038	.017	.041	.023	.010	.013	.007	.003	

C Range: 0 - 360DEG
C Interval: 30.0DEG
Test Speed: HIGH
Temperature:25.3°C
Operators:Mr.Ma
Test Date:20 February 2024
 γ Range: 0 - 180DEG
 γ Interval: 1.0DEG
Test System:EVERFINE GO-2000B_V1 SYSTEM V2.00.459
Humidity:65.0%
Test Distance:6.200m [K=1.0000]
Remarks:

UGR(Unified Glare Rating) Table

Test:U:229.66V I:0.0876A P:19.722W PF:0.9800 Freq:50.00Hz Lamp Flux:2138.72x1 lm										
NAME: Verso 1200 20W NW					TYPE:			WEIGHT:		
SPEC.:					DIM.:			SERIAL No.:		
MFR.: PURATI PTY LTD					SUR.:			Shielding Angle:		
ceiling/cavity	0.7	0.7	0.5	0.5	0.3	0.7	0.7	0.5	0.5	0.3
walls	0.5	0.3	0.5	0.3	0.3	0.5	0.3	0.5	0.3	0.3
working plane	0.2	0.2	0.2	0.2	0.2	0.2	0.2	0.2	0.2	0.2
Room dimensions	Viewed crosswise					Viewed endwise				
x = 2H y = 2H	12.2	13.6	12.5	13.8	14.0	13.6	14.9	13.8	15.1	15.3
3H	12.9	14.2	13.2	14.4	14.6	14.4	15.6	14.6	15.8	16.1
4H	13.3	14.5	13.6	14.7	15.0	14.7	15.9	15.0	16.2	16.4
6H	13.8	14.9	14.1	15.1	15.4	15.1	16.2	15.4	16.5	16.8
8H	13.9	15.0	14.3	15.3	15.6	15.3	16.4	15.7	16.7	17.0
12H	14.0	15.0	14.3	15.3	15.6	15.5	16.5	15.9	16.8	17.1
4H 2H	12.6	13.8	12.9	14.1	14.3	13.7	14.9	14.0	15.2	15.4
3H	13.6	14.6	14.0	14.9	15.2	14.7	15.8	15.1	16.1	16.4
4H	14.1	15.1	14.5	15.4	15.7	15.3	16.2	15.6	16.5	16.9
6H	14.7	15.6	15.1	15.9	16.3	15.9	16.7	16.3	17.1	17.4
8H	15.0	15.7	15.4	16.1	16.5	16.2	17.0	16.6	17.4	17.7
12H	15.1	15.8	15.5	16.2	16.6	16.5	17.2	16.9	17.6	18.0
8H 4H	14.4	15.2	14.8	15.6	16.0	15.5	16.2	15.9	16.6	17.0
6H	15.2	15.9	15.7	16.3	16.7	16.4	17.0	16.8	17.4	17.8
8H	15.6	16.2	16.1	16.6	17.0	16.8	17.4	17.3	17.8	18.3
12H	15.8	16.3	16.3	16.8	17.2	17.2	17.7	17.7	18.1	18.6
12H 4H	14.5	15.2	14.9	15.6	16.0	15.5	16.2	15.9	16.6	17.0
6H	15.4	15.9	15.8	16.4	16.8	16.4	17.0	16.9	17.4	17.9
8H	15.8	16.3	16.3	16.7	17.2	16.9	17.4	17.4	17.9	18.4
Variations with the observer position at spacings(CIE Pub.117):										
S = 1.0H	+ 0.6 / - 0.6					+ 0.5 / - 0.5				
1.5H	+ 0.4 / - 0.6					+ 0.3 / - 0.5				
2.0H	+ 1.0 / - 0.6					+ 1.1 / - 1.0				

CIE Pub.117, 2139 lm Total Lamp Luminous Flux Correct ($8\log(F/F_0) = 2.6$)
Area: 0.17 m²

C Range: 0 - 360DEG
C Interval: 30.0DEG
Test Speed: HIGH
Temperature:25.3°C
Operators:Mr.Ma
Test Date:20 February 2024

γ Range: 0 - 180DEG
γ Interval: 1.0DEG
Test System:EVERFINE GO-2000B_V1 SYSTEM V2.00.459
Humidity:65.0%
Test Distance:6.200m [K=1.0000]
Remarks:

UTILIZATION FACTORS TABLE

Test:U:229.66V I:0.0876A P:19.722W PF:0.9800 Freq:50.00Hz Lamp Flux:2138.72x1 lm		
NAME: Verso 1200 20W NW	TYPE:	WEIGHT:
SPEC.:	DIM.:	SERIAL No.:
MFR.: PURATI PTY LTD	SUR.:	Shielding Angle:

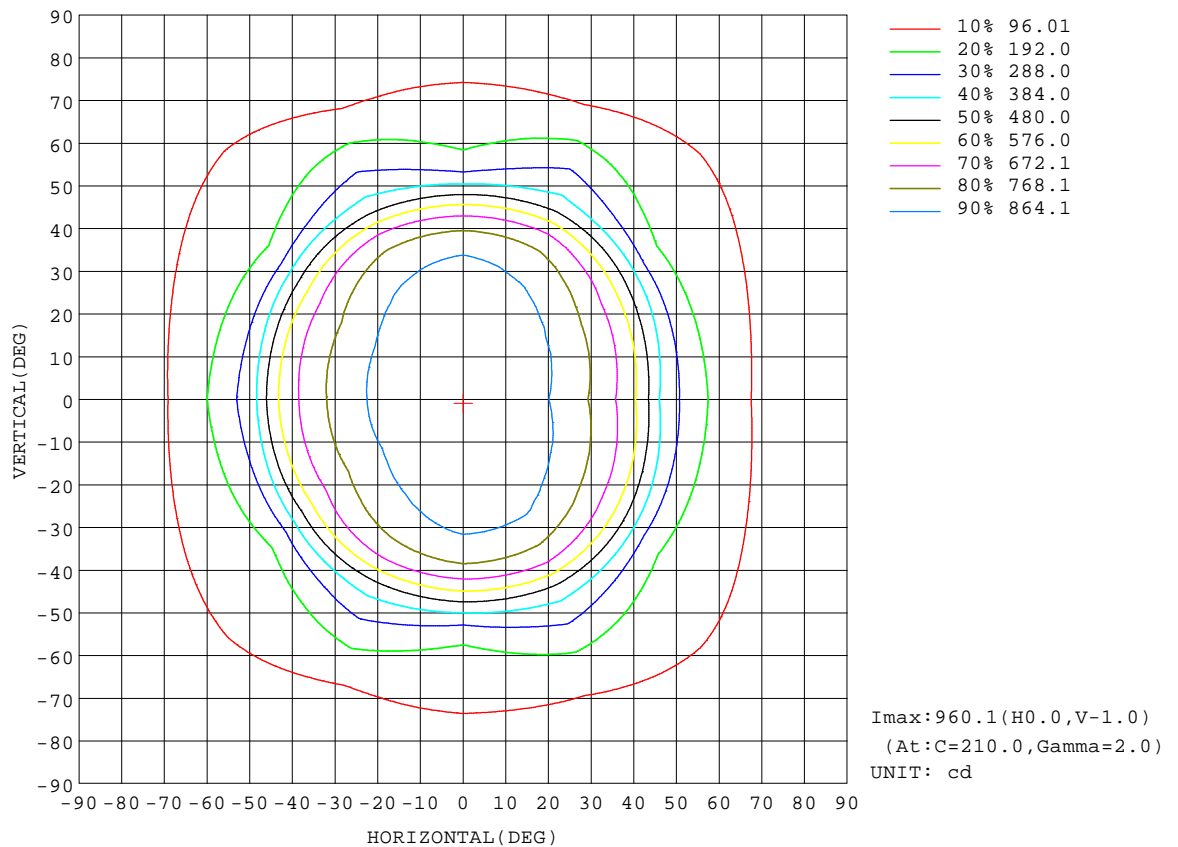
REFLECTANCE										
Ceiling	0.8	0.8	0.8	0.7	0.7	0.7	0.5	0.5	0.5	0
Walls	0.7	0.5	0.3	0.7	0.5	0.3	0.7	0.5	0.3	0
Working plane	0.2	0.2	0.2	0.2	0.2	0.2	0.2	0.2	0.2	0
ROOM INDEX	UTILIZATION FACTORS(PERCENT) $k(RI) \times RCR = 5$									
$k = 0.60$	65	55	49	65	55	49	63	54	49	43
0.80	75	65	59	74	65	59	72	64	58	52
1.00	83	73	67	82	73	67	80	74	66	60
1.25	89	80	74	88	80	74	85	78	73	67
1.50	94	85	80	92	85	79	89	83	78	71
2.00	99	92	87	98	91	86	94	89	84	77
2.50	102	96	91	100	95	90	97	92	88	80
3.00	105	99	95	103	98	94	99	95	91	83
4.00	108	104	100	106	102	98	102	98	95	87
5.00	110	106	103	108	104	101	103	101	98	89
ROOM INDEX	UF(total)									Direct
According to DIN EN 13032-2 2004			Suspended					SHRNOM = 1.25		

C Range: 0 - 360DEG
C Interval: 30.0DEG
Test Speed: HIGH
Temperature:25.3℃
Operators:Mr.Ma
Test Date:20 February 2024

γ Range: 0 - 180DEG
 γ Interval: 1.0DEG
Test System:EVERFINE GO-2000B_V1 SYSTEM V2.00.459
Humidity:65.0%
Test Distance:6.200m [K=1.0000]
Remarks:

ISOCANDELA DIAGRAM

Test:U:229.66V I:0.0876A P:19.722W PF:0.9800 Freq:50.00Hz Lamp Flux:2138.72x1 lm		
NAME: Verso 1200 20W NW	TYPE:	WEIGHT:
SPEC.:	DIM.:	SERIAL No.:
MFR.: PURATI PTY LTD	SUR.:	Shielding Angle:

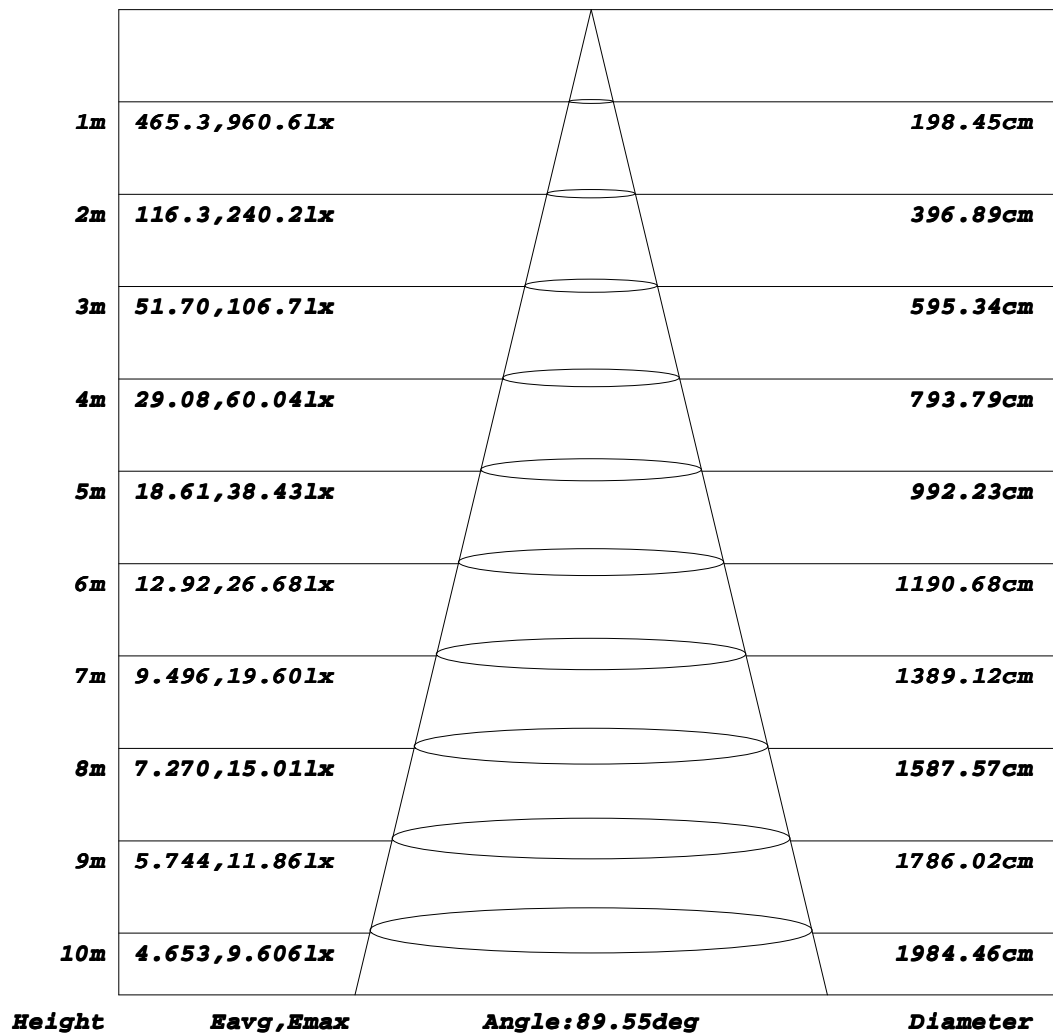


C Range: 0 - 360DEG
C Interval: 30.0DEG
Test Speed: HIGH
Temperature:25.3°C
Operators:Mr.Ma
Test Date:20 February 2024

γ Range: 0 - 180DEG
γ Interval: 1.0DEG
Test System:EVERFINE GO-2000B_V1 SYSTEM V2.00.459
Humidity:65.0%
Test Distance:6.200m [K=1.0000]
Remarks:

AAI Figure

Test:U:229.66V I:0.0876A P:19.722W PF:0.9800 Freq:50.00Hz Lamp Flux:2138.72x1 lm		
NAME: Verso 1200 20W NW	TYPE:	WEIGHT:
SPEC.:	DIM.:	SERIAL No.:
MFR.: PURATI PTY LTD	SUR.:	Shielding Angle:

Flux out:1462 lm


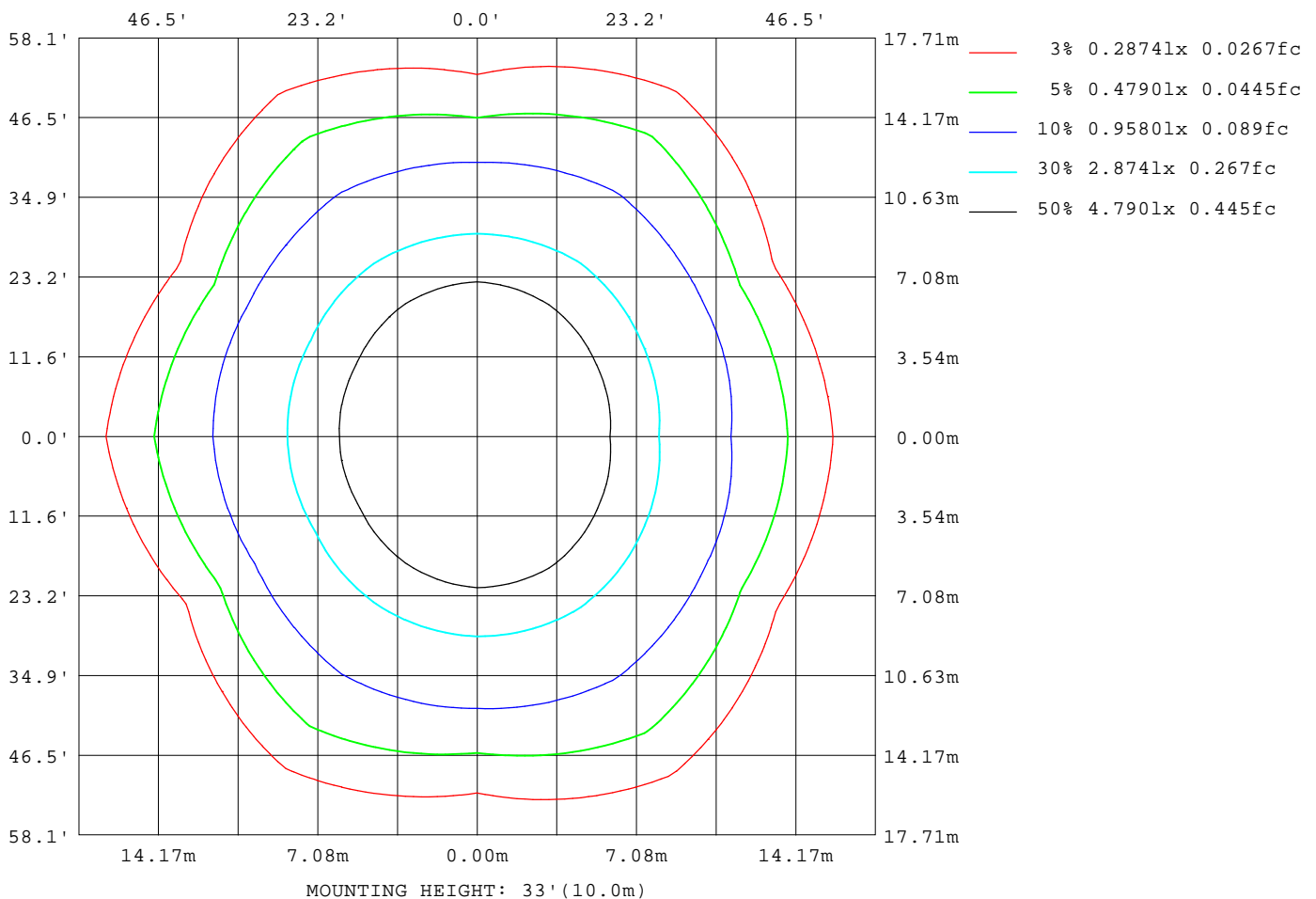
Note: The Curves indicate the illuminated area and the average illumination when the luminaire is at different distance.

C Range: 0 - 360DEG
C Interval: 30.0DEG
Test Speed: HIGH
Temperature: 25.3°C
Operators: Mr.Ma
Test Date: 20 February 2024

γ Range: 0 - 180DEG
γ Interval: 1.0DEG
Test System: EVERFINE GO-2000B_V1 SYSTEM V2.00.459
Humidity: 65.0%
Test Distance: 6.200m [K=1.0000]
Remarks:

ISOLUX DIAGRAM

Test:U:229.66V I:0.0876A P:19.722W PF:0.9800 Freq:50.00Hz Lamp Flux:2138.72x1 lm		
NAME: Verso 1200 20W NW	TYPE:	WEIGHT:
SPEC.:	DIM.:	SERIAL No.:
MFR.: PURATI PTY LTD	SUR.:	Shielding Angle:



C Range: 0 - 360DEG
C Interval: 30.0DEG
Test Speed: HIGH
Temperature: 25.3°C
Operators: Mr.Ma
Test Date: 20 February 2024

γ Range: 0 - 180DEG
γ Interval: 1.0DEG
Test System: EVERFINE GO-2000B_V1 SYSTEM V2.00.459
Humidity: 65.0%
Test Distance: 6.200m [K=1.0000]
Remarks:

LED Avg.L Report

Test:U:229.66V I:0.0876A P:19.722W PF:0.9800 Freq:50.00Hz Lamp Flux:2138.72x1 lm		
NAME: Verso 1200 20W NW	TYPE:	WEIGHT:
SPEC.:	DIM.:	SERIAL No.:
MFR.: PURATI PTY LTD	SUR.:	Shielding Angle:

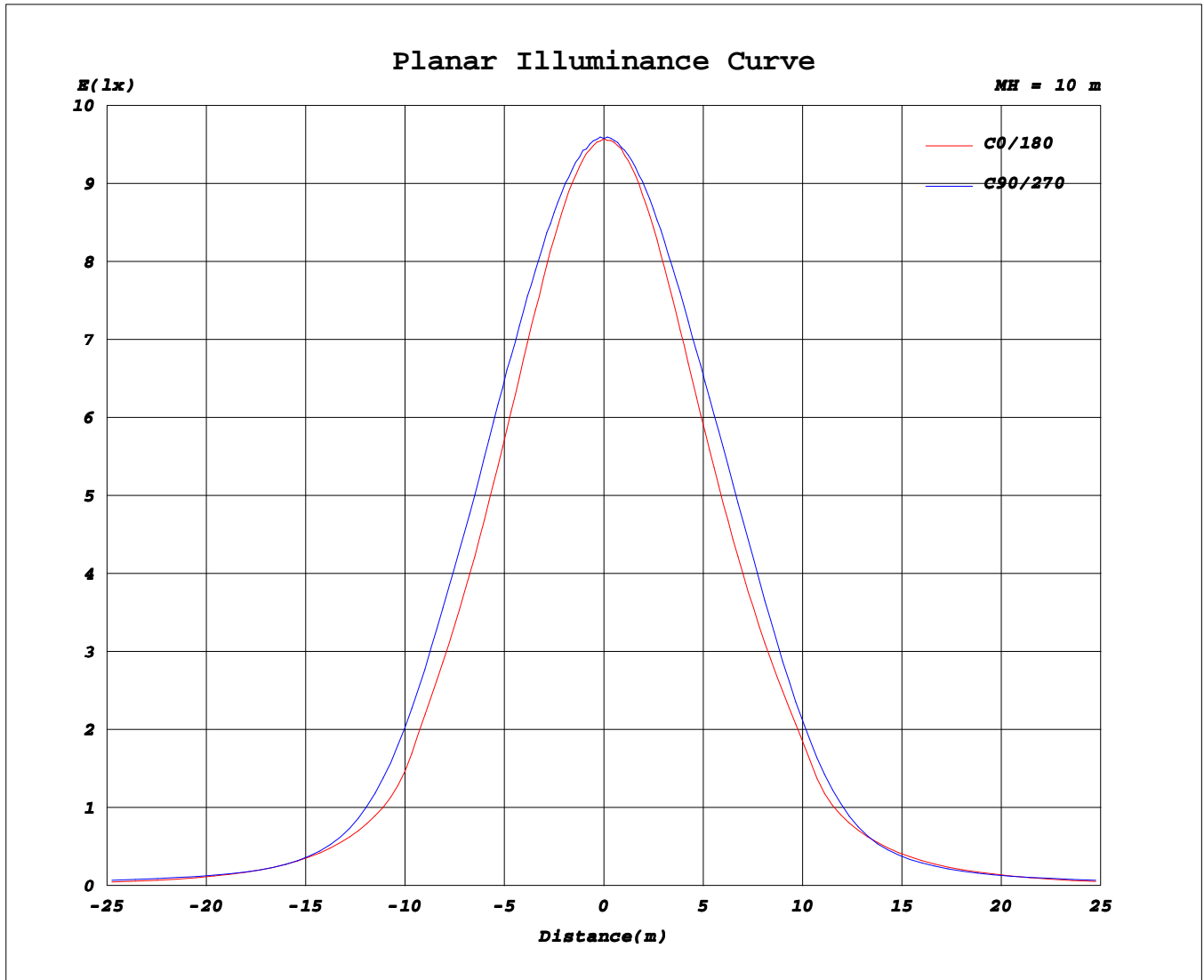
AvgL	cd/m2
L_0~180(65)av	1764
L_0~180(75)av	1508
L_0~180(85)av	1588
L_90~270(65)av	1984
L_90~270(75)av	1942
L_90~270(85)av	2598
L_45(65)av	2022
L_45(75)av	1756
L_45(85)av	2105

Standard: GB/T 29293-2012

C Range: 0 - 360DEG
C Interval: 30.0DEG
Test Speed: HIGH
Temperature:25.3℃
Operators:Mr.Ma
Test Date:20 February 2024

γ Range: 0 - 180DEG
γ Interval: 1.0DEG
Test System:EVERFINE GO-2000B_V1 SYSTEM V2.00.459
Humidity:65.0%
Test Distance:6.200m [K=1.0000]
Remarks:

Planar Illuminance Curve



C Range: 0 - 360DEG
C Interval: 30.0DEG
Test Speed: HIGH
Temperature: 25.3°C
Operators: Mr.Ma
Test Date: 20 February 2024

γ Range: 0 - 180DEG
γ Interval: 1.0DEG
Test System: EVERFINE GO-2000B_V1 SYSTEM V2.00.459
Humidity: 65.0%
Test Distance: 6.200m [K=1.0000]
Remarks:

LUMINOUS DISTRIBUTION INTENSITY DATA

Test:U:229.66V I:0.0876A P:19.722W PF:0.9800 Freq:50.00Hz Lamp Flux:2138.72x1 lm																	
NAME: Verso 1200 20W NW									TYPE:			WEIGHT:					
SPEC.:									DIM.:			SERIAL No.:					
MFR.: PURATI PTY LTD									SUR.:			Shielding Angle:					

Table--1

UNIT: cd

C(DEG) γ (DEG)	0	30	60	90	120	150	180	210	240	270	300	330						
0	958	958	958	958	958	958	958	958	958	958	958	958						
5	950	955	957	956	954	952	956	954	956	958	957	955						
10	932	942	951	951	943	937	943	942	948	954	951	943						
15	904	923	941	942	927	914	919	921	935	947	939	922						
20	866	893	924	929	903	880	885	893	917	936	920	891						
25	818	855	901	913	873	838	843	856	893	921	895	852						
30	760	806	869	881	836	785	791	808	862	899	861	800						
35	686	741	814	825	782	719	727	747	818	851	816	734						
40	587	652	729	734	696	633	646	665	738	757	740	647						
45	416	505	578	575	533	476	525	518	582	599	594	499						
50	300	328	416	385	384	291	343	335	410	398	422	325						
55	224	204	314	236	294	181	259	199	321	245	330	197						
60	162	146	231	163	216	131	192	144	243	174	250	140						
65	116	125	162	140	153	119	138	126	167	145	178	124						
70	79.2	115	110	126	93.8	105	88.4	116	103	131	110	111						
75	69.8	75.5	84.6	82.6	77.9	63.9	62.9	76.2	81.9	88.3	82.1	74.9						
80	52.3	55.5	74.5	62.7	62.3	50.4	61.0	51.9	74.8	60.3	80.1	53.3						
85	17.5	29.9	36.0	35.7	25.6	23.8	29.6	27.0	35.0	41.3	41.2	30.8						
90	0.26	0.26	0.35	0.35	0.33	0.27	0.57	0.38	0.41	1.11	0.80	0.39						
95	0.33	0.34	0.43	0.46	0.42	0.34	0.39	0.42	0.50	0.51	0.45	0.40						
100	0.42	0.42	0.55	0.59	0.55	0.43	0.45	0.48	0.61	0.61	0.56	0.46						
105	0.53	0.54	0.72	0.79	0.71	0.55	0.54	0.59	0.77	0.78	0.69	0.55						
110	0.69	0.72	0.93	1.02	0.95	0.71	0.66	0.74	0.97	0.98	0.87	0.74						
115	0.94	0.98	1.17	1.33	1.21	0.96	0.83	0.99	1.20	1.22	1.11	0.90						
120	1.28	1.32	1.44	1.55	1.49	1.29	1.10	1.30	1.47	1.49	1.37	1.19						
125	1.67	1.69	1.75	1.86	1.78	1.65	1.44	1.64	1.74	1.77	1.63	1.55						
130	2.07	2.05	2.06	2.19	2.10	2.01	1.80	1.95	2.04	2.09	1.91	1.91						
135	2.39	2.37	2.39	2.51	2.41	2.32	2.13	2.26	2.34	2.39	2.22	2.23						
140	2.67	2.68	2.73	2.81	2.71	2.62	2.39	2.55	2.63	2.70	2.54	2.53						
145	2.96	3.01	3.05	3.11	2.99	2.88	2.65	2.80	2.90	2.99	2.88	2.84						
150	3.28	3.37	3.34	3.38	3.25	3.13	2.93	3.06	3.16	3.26	3.20	3.17						
155	3.65	3.73	3.60	3.63	3.51	3.42	3.27	3.33	3.43	3.52	3.49	3.54						
160	4.01	4.04	3.84	3.87	3.77	3.71	3.63	3.62	3.70	3.77	3.75	3.90						
165	4.32	4.26	4.03	4.06	3.98	3.99	3.99	3.89	3.93	3.98	3.96	4.20						
170	4.67	4.42	4.21	4.22	4.18	4.22	4.32	4.14	4.13	4.15	4.16	4.40						
175	4.83	4.54	4.35	4.35	4.32	4.42	4.54	4.33	4.28	4.29	4.30	4.50						
180	4.89	4.58	4.43	4.41	4.42	4.58	4.89	4.58	4.42	4.41	4.42	4.57						

C Range: 0 - 360DEG
C Interval: 30.0DEG
Test Speed: HIGH
Temperature:25.3°C
Operators:Mr.Ma
Test Date:20 February 2024
γ Range: 0 - 180DEG
γ Interval: 1.0DEG
Test System:EVERFINE GO-2000B_V1 SYSTEM V2.00.459
Humidity:65.0%
Test Distance:6.200m [K=1.0000]
Remarks: